

# Kiewa Valley Battery Energy Storage System

Trina Solar is proposing to develop, construct and operate a 500MW Battery Energy Storage System (BESS) in the Kiewa Valley VIC, located approximately 3 km north-east of Dederang, on Yackandandah-Dederang Road. The purpose of the development is to assist the national electrical grid at times of peak demand and in times of emergency.

## The Project

The Kiewa Valley BESS will utilise the latest technology in the sector, complying with all safety and hazard parameters that are highly regulated by the Australian Government. Design and layout of the project will be compliant with local planning laws and will specifically aim to minimise any potential environmental, cultural heritage and neighbour impacts.

Construction and operation of the project would involve the following key components:

500 MW / 1,000MWh BESS including:

- An onsite substation connecting to the existing 330kV terminal substation
- Associated infrastructure including transformers and inverters
- Approximately 2.9 km of internal access tracks
- Operations and maintenance (O&M) buildings, offices, staff amenities Switch yard
- Parking site.

## Questions

For more information and to register to receive project updates, visit the project website <https://kiewavalleybess.com.au/>, or email the team at [kiewavalleybess@trinasolar.com](mailto:kiewavalleybess@trinasolar.com).

## The planning and approval process

Trina Solar is in the early investigation stages of a development application and is currently assessing the limitations and restrictions of the project through environmental assessments and stakeholder engagement. The information gathered at this stage will be compiled to ensure the development plans align with local landscape values and identity, and therefore inform the final planning permit application.

Once submitted, the Minister for Planning will decide whether to issue a development approval.

## Benefits for the community



### Create jobs

Direct employment opportunities: 50 full-time equivalent jobs during construction, and 10 contractor roles when in operation.



### Income for the local area

Will diversify income and increase revenue to ancillary services such as food and accommodation to the local area.

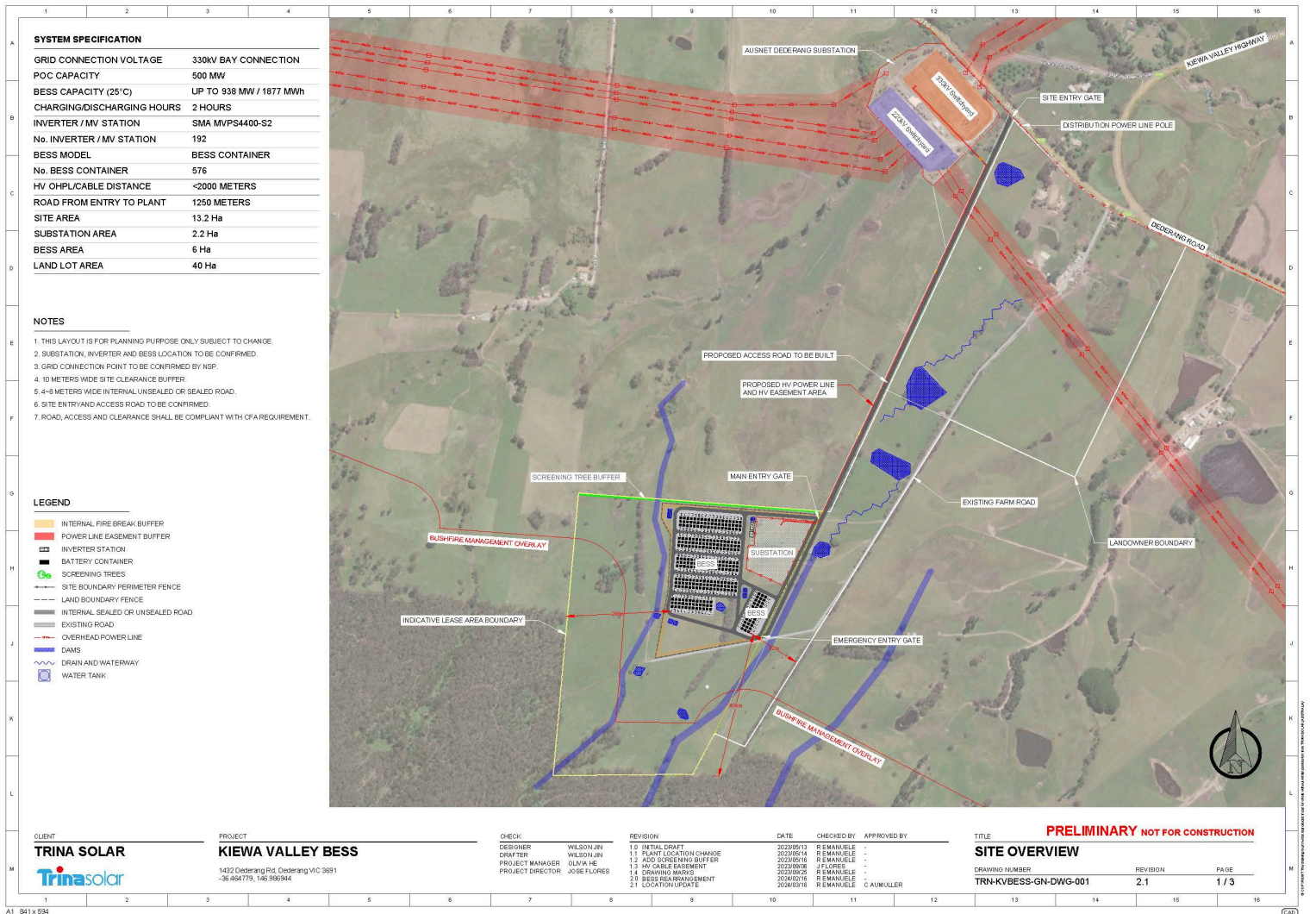


### Increases clean energy storage

Significantly contributes towards the VIC Government's net-zero emissions by 2050 target.



## Indicative site layout



## About Trina Solar

Trina Solar is an internationally recognised leader in solar farm developments, known for its supply of PV modules with its own manufacturing divisions of solar modules, trackers, electrolysers, and Battery Energy Storage Systems (BESS).

With local offices in Melbourne, Sydney, Perth and Brisbane, the company has demonstrated its capability to deliver renewable energy projects by developing, constructing, and operating over 8GW of renewable energy projects worldwide. Trina also has a strong pipeline of new projects currently in the development and construction phase, indicating its ongoing global commitment with the transition to clean energy and reaching net zero.

With an enviable global manufacturing division, significant record of accomplishment, Trina Solar brings its demonstrated capability in renewable energy projects to the local Australian market. The company's expertise and experience make it well-positioned to play a leading role in Australia's transition to renewable energy.

## The site

The project site (outlined in red) would have a development footprint of up to 15 hectares. Its location makes for an easy connection to the existing Dederang Terminal Station.

## Provide feedback

To leave feedback on the proposed Battery Energy Storage System (BESS) in the Kiewa Valley, scan the QR code below.



[kiewavalleybess@trinasolar.com](mailto:kiewavalleybess@trinasolar.com)



<https://kiewavalleybess.com.au/>